

**The future is already here —
it's just not very evenly distributed.**
William Gibson

AuditNZ May 2020

Melissa Clark-Reynolds @HoneyBeeGeek melissa@futurecentre.nz



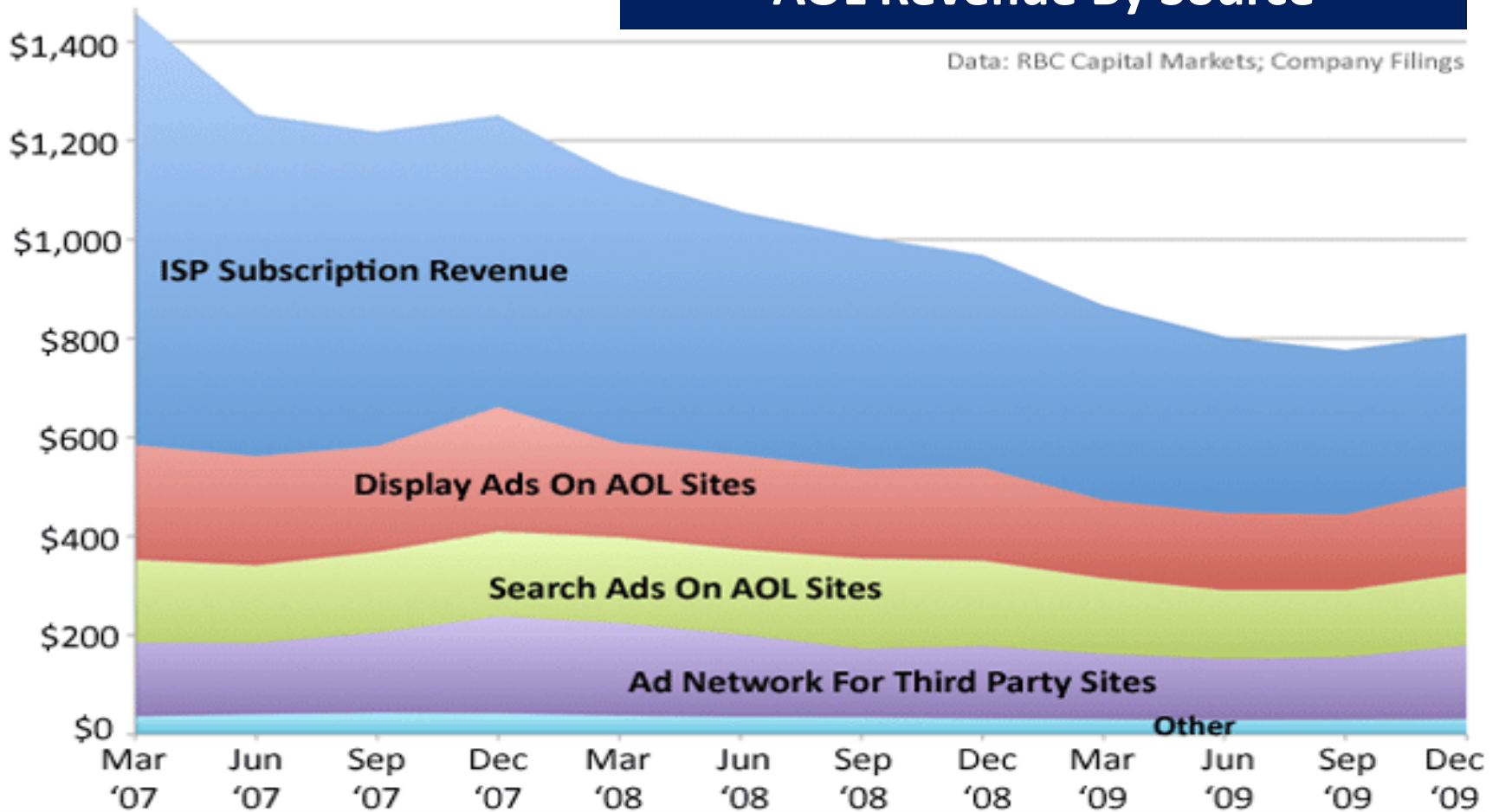
FutureCentre.nz



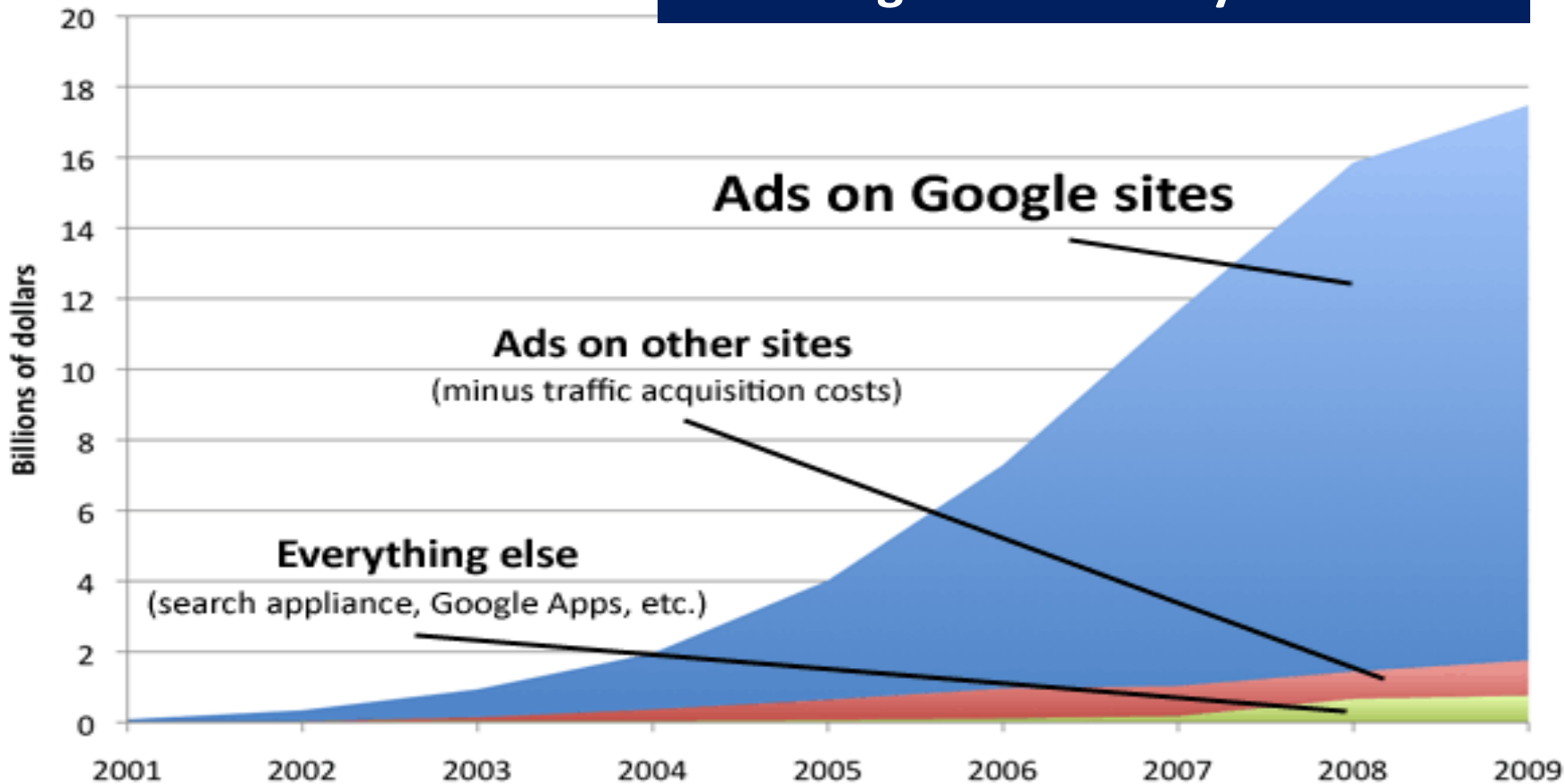
AOL Revenue By Source

In Millions

Data: RBC Capital Markets; Company Filings



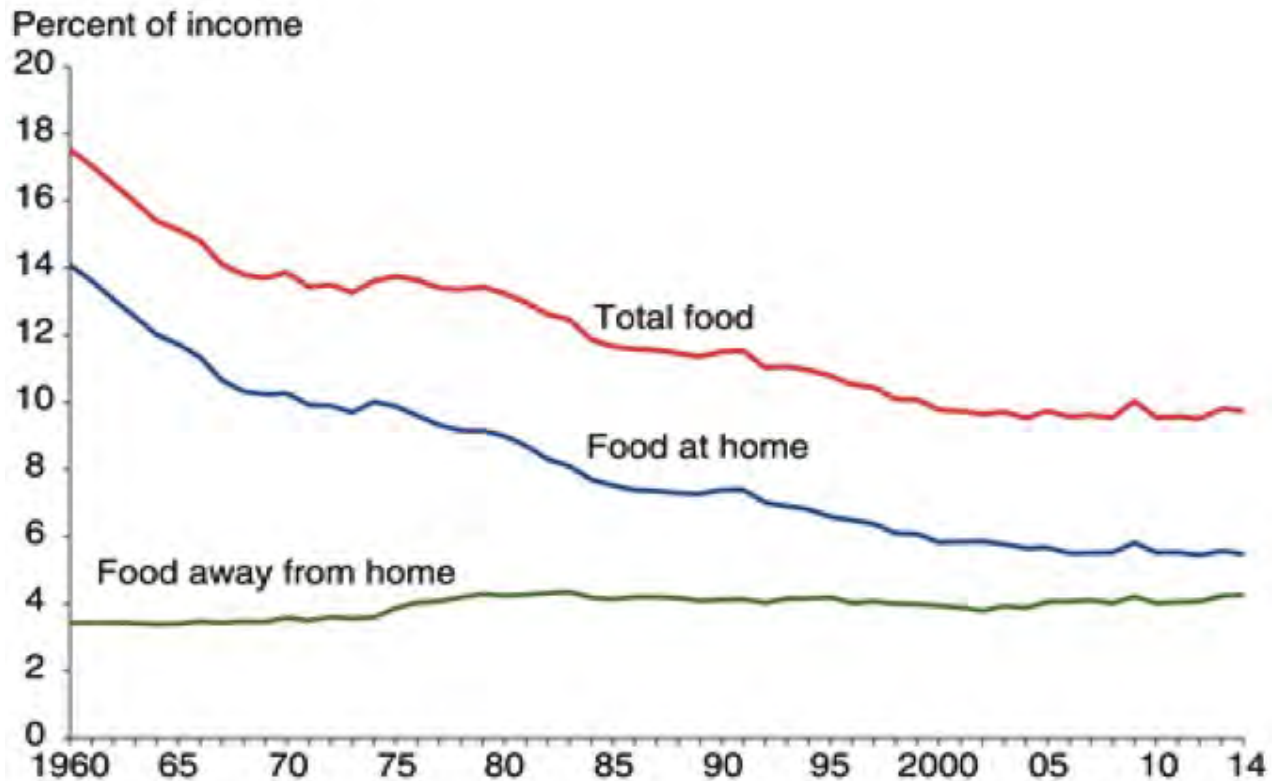
Google Revenue By Source



Source: Company reports, Business Insider analysis

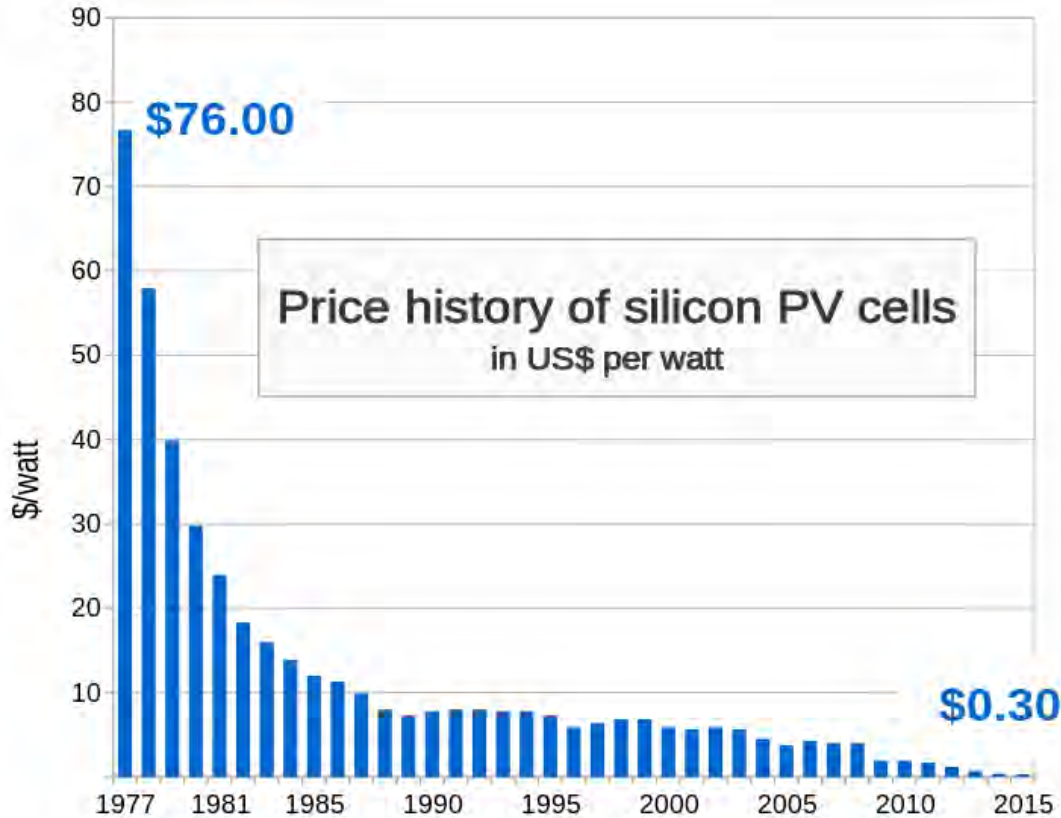


Percent of per capita disposable income spent on food in the United States, 1960-2014



Source: USDA, Economic Research Service, Food Expenditure Series.

Price History of Silicon PV Cells



Source: Bloomberg New Energy Finance & pv.energytrend.com

Scott Anthony
Dual Transformation

“The failure is not in failing to see the disruption coming, but in [failing] to ... rethink the business model. Fundamentally, when disruption is on the horizon, businesses need to reimagine who you are and what you do to offer value.”



As of 3/16, RTR stores are closed due to Covid-19.

The Spring Wedding Edit

Guest, bride, or bridesmaid—discover the must-rent styles for the big day (and all those little days before).

RENT NOW



Blue Apron ON THE MENU PRICING WINE GIFTS MARKET LOG IN SIGN UP

Explore our Menus

2 SERVING	2 SERVING	4 SERVING
Signature	Vegetarian	Signature for Four

Choose from an ever-changing mix of meat, fish, Beyond Meat™, WW Approved, Diabetes Friendly recipes and health-conscious offerings.

WEEK OF APRIL 6TH GET COOKIN'

Three images of food dishes are shown in a row. The first is a plate of appetizers, the second is a bowl of salad, and the third is a plate of rice and vegetables.

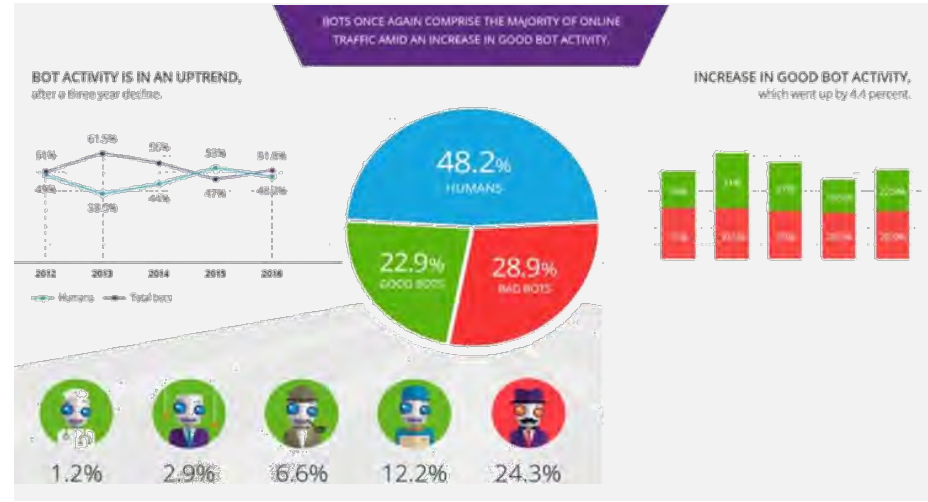


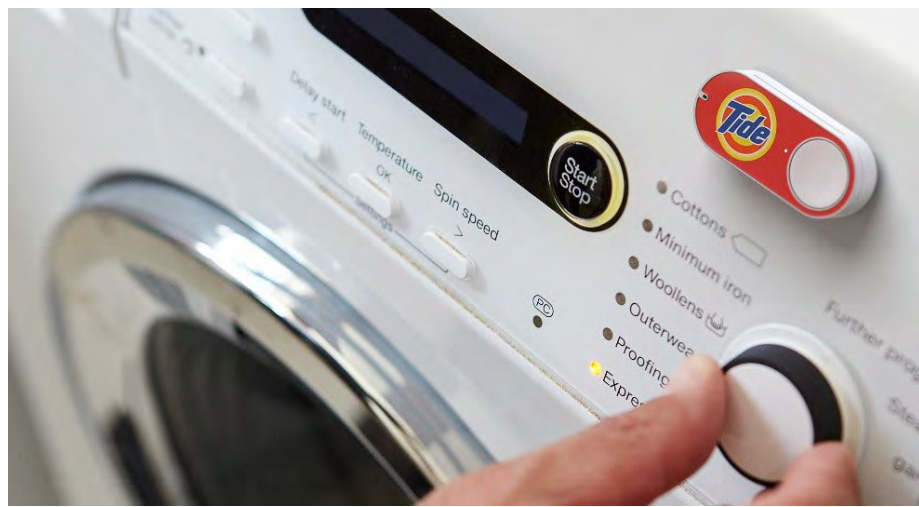
Mercedes-Benz Collection

How it works Pricing FAQ Get S

Seize the moment. Drive the Collection

Welcome to Mercedes-Benz Collection, a monthly subscription service that allows you to drive an entire range of vehicles.





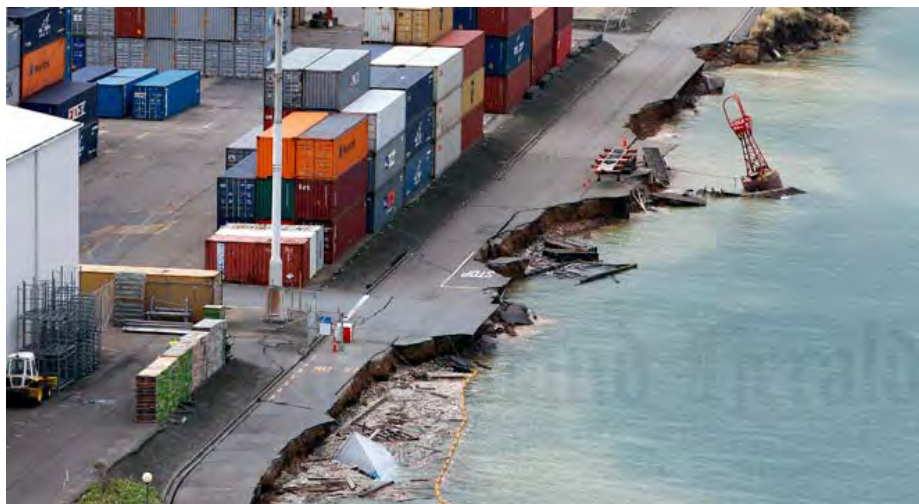
Whirlpool®

WORKS WITH **Yummy!**

Select Whirlpool® Smart Cooking Appliances Now Work with Yummy!

Whirlpool smart cooking appliances just got a lot smarter! Through a series of over the

The advertisement features a hand holding a smartphone displaying a recipe for salmon. In the background, a Whirlpool smart oven is visible. The Whirlpool logo is on the left, and the 'WORKS WITH Yummy!' logo is on the right. The background is a mix of white and orange.



Curiosity

“You don’t have to be a polymath yourself, but you do have to be interested in what the polymaths are doing and thinking.” John Sculley
(former CEO of PepsiCo & Apple)





Science & Health

China Investigates Respiratory Illness Outbreak Sickening 27

By Associated Press
December 31, 2019 04:54 AM



Science & Health
Iraq's Ancient Nineveh Re-created Via VR Technology



Africa
Cameroon Continues to Suffer Staggering Mother, Child Birth Mortality Rate



COVID-19 Pandemic
Smallpox Eradication 40 Years Ago Has Parallels



New Results

24 comments

Previews

News

Discovery of a novel coronavirus associated with the recent pneumonia outbreak in humans and its potential bat origin

Peng Zhao, Xiang-Li Yang, Xian-Guang Wang, Ben Hu, Lei Zhang, Wei Zhang, Hao-Pei Si, Yan Zou, Bei Li, Chao-Lin Huang, Hui-Dong Chen, Jing Chen, Yun Luo, Hua Guo, Rui-Zi Jiang, Mei-Qin Liu, Ying Chen, Xue-Pei Shen, Yi Wang, Xue-Shuang Zhang, Kai Zhao, Quan-Jian Chen, Pei-Dang Lin, Lin Liu, Bing Yan, Fu-Xian Zhan, Yan-Yi Wang, Guang-Xiao Zhang, Li Shi
doi: <https://doi.org/10.1101/2020.01.22.914952>

Now published in *Research* doi: [10.1093/rs/oa-r012-7](https://doi.org/10.1093/rs/oa-r012-7)

Abstract | History | Metrics | Preview PDF

Abstract

Since the SARS outbreak 18 years ago, a large number of severe acute respiratory syndrome related coronaviruses (SARSr-CoV) have been discovered in their natural reservoir host, bats. Previous studies indicated that some of those bat SARSr-CoVs have the potential to infect humans. Here we report the identification and characterization of a novel coronavirus (nCoV-2019) which caused an epidemic of acute respiratory syndrome in humans, in Wuhan, China. The epidemic, started from December 12th, 2019, has caused 198 laboratory confirmed infections with three fatal cases by January 20th, 2020. Full-length genome sequences were obtained from five patients at the early stage of the outbreak. They are almost identical to each other and share 79.5% sequence identity to SARS-CoV. Furthermore, it was found that nCoV-2019 is 96% identical at the whole genome level to a bat coronavirus. The pairwise protein sequence analysis of seven conserved non-structural proteins show that this virus belongs to

Posted January 23, 2020.

Download PDF

Supplementary Material

Email

Share

Create Tools

Track | View 100%

COVID-19 SARS-CoV-2 preprints from medRxiv and bioRxiv

Subject Area

Microbiology



VERSUS CHINESE / PENINSULAR 2020/1

SHARE THIS



A Chinese doctor who tried to issue the first warnings about the deadly coronavirus outbreak has died, the hospital treating him has said.

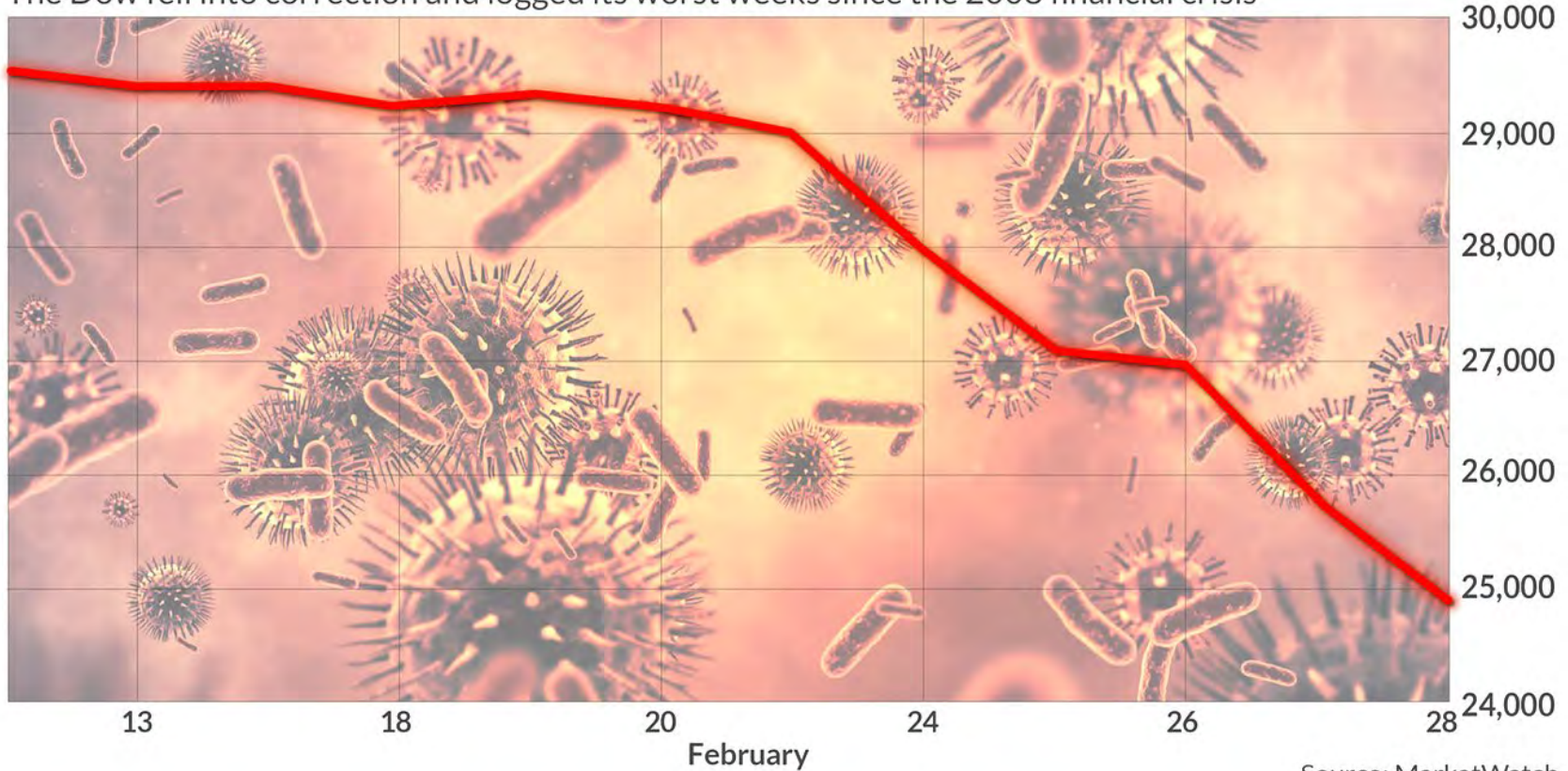


China's coronavirus disrupts global container shipping trade



DOW is being plagued by coronavirus

The Dow fell into correction and logged its worst weeks since the 2008 financial crisis



Source: MarketWatch

Zoom Video Communications Inc
NASDAQ: ZM

+ Follow

114.32 USD -10.68 (8.54%) ↓

Closed: 6 Mar, 7:59 pm GMT-5 · Disclaimer
After hours 113.60 -0.72 (0.63%)

1 day 5 days 1 month **6 months** YTD 1 year 5 years Max



K12 Inc.
NYSE: LRN

+ Follow

20.50 USD -0.25 (1.20%) ↓

Closed: 6 Mar, 4:18 pm GMT-5 · Disclaimer
After hours 20.55 +0.15 (0.73%)

1 day 5 days **1 month** 6 months YTD 1 year 5 years Max



Slack Technologies Inc
NYSE: WORK

+ Follow

26.42 USD -1.97 (6.94%) ↓

Closed: 6 Mar, 7:57 pm GMT-5 · Disclaimer
After hours 26.23 -0.19 (0.72%)

1 day 5 days 1 month **6 months** YTD 1 year 5 years Max





Netflix lowers video quality in Europe because of coronavirus-induced strain

by [NAPIER LOPEZ](#) — 7 days ago in [APPS](#)



Mckinsey
April 2020

“If a silver lining can be found, it might be in the falling barriers to improvisation and experimentation that have emerged among customers, markets, regulators, and organizations. In this unique moment, companies can learn and progress more quickly than ever before. The ways they learn from and adjust to today’s crisis will deeply influence their performance in tomorrow’s changed world, providing the opportunity to retain greater agility as well as closer ties with customers, employees, and suppliers. Those that are successfully able to make gains “stick” will likely be more successful during recovery and beyond”.



Mckinsey
April 2020

“If a silver lining can be found, it might be in the falling barriers to improvisation and experimentation that have emerged among customers, markets, regulators, and organizations. In this unique moment, companies can learn and progress more quickly than ever before. The ways they learn from and adjust to today’s crisis will deeply influence their performance in tomorrow’s changed world, providing the opportunity to retain greater agility as well as closer ties with customers, employees, and suppliers. Those that are successfully able to make gains “stick” will likely be more successful during recovery and beyond”.